

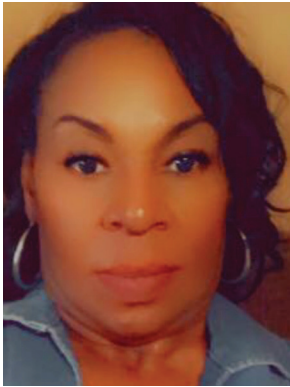


Covington DRC Update



JANUARY 2022

WELCOME



Annette Ellis
Program Manager

This past quarter, the Covington Day Reporting Center had the opportunity to host a Christmas giveaway to help our participants provide gifts for their families. Thank you to our community partner, Target in Covington, for making the day possible! As part of the giveaway, participants got to select from toys, clothing and school supplies free of charge, and there was even a raffle for a special gift for two boys and two girls.



This quarter, we are also happy to report that participants are achieving success in education. Participant Danielle B. recently passed the first of four subject exams for the HiSET high school equivalency test and says she is now confident she will earn her diploma.

Finally, we are excited to announce that our staff are currently working on planning our Spring Transition Ceremony for this March. During the pandemic, we learned a lot about conducting virtual events, so we look forward to giving our graduates a heartfelt celebration of their achievements!

SPOTLIGHT ON... PARTICIPANT JEANNEDELL C.



Congratulations to DRC participant Jeannedell C. for her continued success in our program! When Jeannedell enrolled at the DRC in October 2021, she was uncertain about what to expect, but during her time at the center, she has truly blossomed.

Since coming to our program, she has been very conscientious about participating in groups and classes and is consistently full of positive energy and confidence. She has also reported growth in her personal life and developed many new friendships.

Thank you, Jeannedell, for setting a positive example for your fellow program participants. We know you have many successes ahead of you.

DID YOU KNOW? NATURAL COMMUNITIES ARE ESSENTIAL

By actively working to improve offenders' bonds and ties to prosocial community members, non-residential and residential reentry programs provide an environment that supports and positively reinforces desired new behaviors. Community members can include family members, spouses, supportive others, religious groups, 12-step programs, and other community organizations. These bonds and ties also continue to support offenders as they complete their supervision and treatment requirements and reintegrate more and more into the community.

By Wendy Dressler, GEO Care Research Analyst

